

StorTrends 2610i Specifications

Chassis	2U Chassis – 24 Drive Bays
Raw Capacity (TB)	10.96 - 83.60
Usable Capacity (TB)	7.86 - 62.21
Effective Capacity (TB)	13 - 256
Max Storage Pool Capacity (TB)	256
Max # of Expansion Shelves	3 (Head + 3)
RAID Options	RAID RT Supporting: RAID 1, RAID 5, RAID 10
Hot Spare Options	Yes
Hot Tier SSD Capacities	480GB, 960GB, 1.92TB, 3.84TB
Cold Tier SSD Capacities	480GB, 960GB, 1.92TB, 3.84TB
SSD Drive Types	eMLC Write Intensive (Hot Tier) MLC Read Intensive (Cold Tier)
SSD Endurance Protection	Yes, EnLift Cache
Max IOPS (8K 100% Read)	231,000 IOPS
Mixed IOPS (8K 70% Read/30% Write)	117,400 IOPS
Max IOPS (8K 100% Write)	61,500 IOPS
Deduplication	✓
Compression	✓
Thin Provisioning	✓
Snapshots	✓
Replication (WAN Optimization)	✓
Advanced Caching	✓
ManageTrends GUI	HTML5
Hypervisor Certified Support	VMware ESXi, Microsoft Hyper-V, Citrix Xen, KVM

2610i Physical Specifications

Chassis Dimensions (HxWxD)	3.5" x 17.2" x 26.75" (88mm x 437mm x 679mm)
Chassis Weight	85 lbs (38.6 kg)
Power Supplies	920W Redundant Power Supplies
CPU	4x Intel Xeon E5-2430 v2
Memory	192GB RAM
Network Connectivity	4x 10GbE Network Ports & 4x 1GbE Network Ports (Add-On NICs Available)

2502j Expansion Shelf Specifications

Expansion Shelf	2U Chassis – 24 Drive Bays
Expansion Shelf Dimensions (HxWxD)	3.5" x 19" x 22" (88mm x 483mm x 559mm)
Expansion Shelf Weight	30.86 lbs (14 kg)
Raw Capacity (TB)	11.52 - 91.20
Usable Capacity (TB)	8.73 - 69.12
Effective Capacity (TB)	14.84 - 256
Max Storage Pool Capacity (TB)	256
Power Supplies	300W Redundant Power Supplies

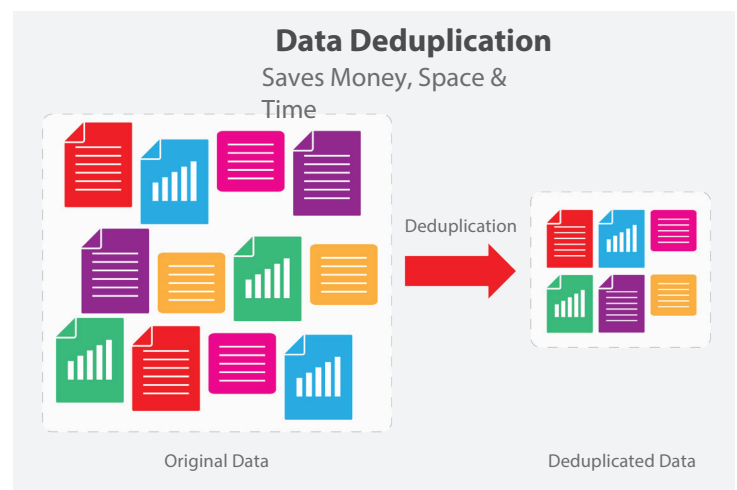


The Perfect All Flash Array

The StorTrends 2610i is the latest generation All Flash Array (AFA) engineered for dense capacity and blistering performance. The 2610i delivers high performance, low latency, and enterprise class features at an SMB price point - all from a market-proven technology veteran with thousands of installations worldwide. The StorTrends 2610i AFA is the most cost-effective All Flash SAN market, and with average latency below 1ms and performance metrics above 231,000 IOPS, the StorTrends 2610i is the perfect All Flash Array for centralized storage, mixed workloads, VDI and high performance applications.

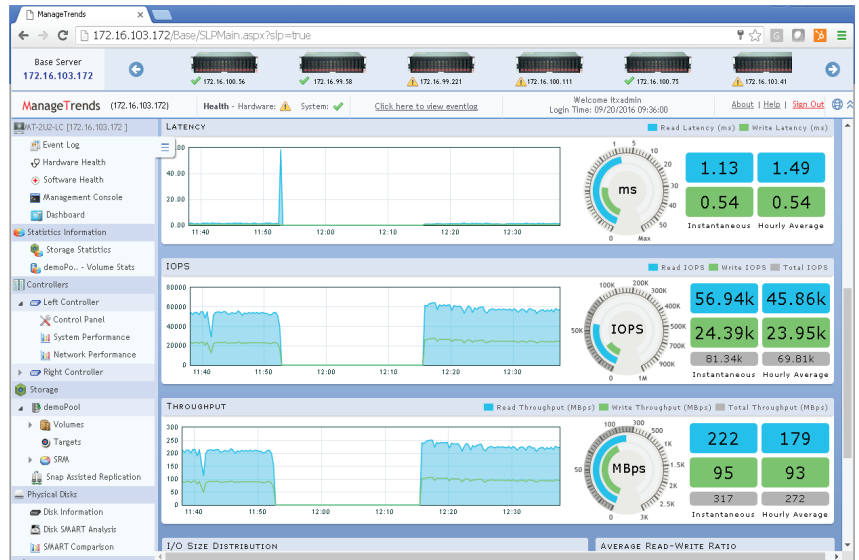
High Performance with Dedupe & Compression

The 2610i offers both Deduplication and Compression for superb space savings. StorTrends Customers see on average a 4:1 dedupe and compression ratio in virtualized environments. With dedupe and compression enabled, a mixed workload of 8K blocks split into 70% Read I/O and 30% Write I/O achieves 117,400 IOPS. StorTrends deploys a split tier within the 2610i for hot data and cold data. The hot data is stored in a non-deduped, non-compressed tier for extreme performance. When data within this tier becomes infrequently accessed, it is then deduplicated and compressed while being migrated down into the cold tier. Both the hot and cold tiers are comprised of SSDs allowing for extreme IOPS and sub-1ms sustained latency.



SSD Endurance with EnLift Cache

SSD Endurance is a major concern for customers and rightfully so. Many AFAs in the market are using consumer grade low-end SSDs that only offer limited DWPD (Drive Writes Per Day). Without any protection, the low-end consumer grade SSDs wear out and require replacement within an enterprise storage array. The StorTrends 2610i takes SSD Endurance to a new industry standard with its patented EnLift Cache. EnLift Cache is a patented cache buffer comprised of enterprise class SSDs that offer a whopping 10 DWPD (Drive Writes Per Day). This means that 2TB per day can be written to a 200GB enterprise class SSD for a period of 5 years before the SSD will run out of endurance. The StorTrends 2610i architecture was designed to utilize the enterprise class SSDs to mitigate intensive wear on the system and therefore significantly increase the lifespan of all drives within the array.



Experience Creates Value

The 2610i starts at \$0.50/GB range for useable effective capacity with additional storage shelves starting in the \$0.40/GB range. StorTrends has been architected to leverage the highest performance and most cost-effective SSDs in the market today while incorporating superior space savings technologies such as deduplication and compression. With StorTrends, customers can expect to by reduce their physical storage footprint by up 75% thanks to the remarkable data compaction technologies architected in the 2610i. StorTrends has been a RAID expert in the storage industry since 1995. AMI's deep understanding of how data is written and stored has allowed StorTrends to architect the most efficient All Flash Array in the market while creating unsurpassable value.

Proof of Concept (POC) & Money Back Guarantee

StorTrends is among the few vendors in the data storage industry willing to offer customers zero-obligation Proof of Concept (POC) equipment prior to purchasing a storage solution. This allows customer to fully evaluate the StorTrends solutions for up to 30 days without risk or investment. Following the evaluation term, customers can elect to purchase the POC equipment or return the full solution with no questions asked. In addition to the POC offering, StorTrends also offers a 30 Day Money Back Guarantee. Customers unhappy with the StorTrends 2610i or the StorAID Support within the first 30 days can then return it for a full refund - again, with no questions asked. AMI understands the performance, features and value of the 2610i and offers these programs as a testament to our full confidence behind the industry's most valuable storage solutions.



American Megatrends Inc. | www.ami.com
5555 Oakbrook Parkway, Bldg. 200 Norcross
GA 30093 | 770.246.8600

Sales & Product Information

StorTrendsSales@ami.com | 800.828.9264

Technical Support

stortrends-support@ami.com |
770.246.8761 stortrends.com

